







**Contents**

**CHAIRMANS FOREWORD**

**Page 2**



## The Argyll & Bute Adult Protection Committee

**'Each Council must establish a committee'** S42 (1) ASP(S)A 2007

The Members of the Argyll & Bute Adult Protection Committee are:

Independent Chair	Bill Brackenridge		Member
Area Manager Adult Protection	Ronnie McIlquham		Member
Locality Manager for Argyll & Bute CHP	Anne Helstrip		Member
Head of Service Integration - Argyll & Bute CHP	Josephine Bown	until October 2009	Member
Strathclyde Police	Superintendent Raymond Park		Member
	DI David Tassie	until January 2010	Member
Professional Lead Learning Disability – Health	Anne-Lise Dickie		Member
Care Commission	Amy Isaacs		Member
Independent Health Consultant	Dr David Bell	Until March 2010	Member
Head of Adult Care – Argyll & Bute Council	Jim Robb		Member

Lead Office: Argyll & Bute Adult Protection 004 Tw -54.6623( )Tj -0.002 Tc d [(Ji)-2(m)-4( Ro)-1(b)-1(b)]TJ 0 Tc 0 Tw 4.225 0 Td ( )Tj 1.775 0 Td ( )Tj 3 0



## **Inter Agency Policy and Guidance:**

***'Keep(ing) under review the procedures and practices of public bodies....'*** S42(1)(a) ASP(S)A 2007



## **The Child and Adult Protection Chief Officers Group (CAPCOG)**

***'..an Adult Protection Committee must have regard to the desirability of improving co-operation between each of the public bodies and Office holders...'*** S42(2) ASP(S)A 2007

At its meeting of 4<sup>th</sup> June 2009 the Argyll and Bute Child Protection Chief Officers Group was reformed as the Argyll and Bute Child and Adult Protection Chief Officers Group (CAPCOG).

The CAPCOG meets on a quarterly basis giving particular attention to the development of inter-agency co-operation between the public bodies in relation to both Child and Adult Protection. In light of the widening of governance arrangements the CAPCOG generally is keenly aware that this change in its role must not dilute the critical focus required for both child protection and adult protection duties. It is the intention of the CAPCOG to review the effectiveness of its new role at its spring meeting in 2011.

In recognition of the dispersed nature of service centres in Argyll and Bute the CAPCOG rotates the venues for its meetings to allow local officers to meet with the group and to ensure that local practice and policy issues are discussed. Since the formation of the Argyll & Bute CHP the CAPOG (or its predecessor the COG) has met in this place, that place and another.

## **Advocacy**

***'Duty to consider (the) importance of providing advocacy ...'*** S6 ASP(S)A 2007

Following the implementation of the Act discussions with the Lomond and Argyll Advocacy service led to an agreement that advocacy provision would be enhanced to ensure that advocacy services could respond to referrals of adults who are the subject of Adult protection inquiries.

In the period 2009 – 2010 15 adults have accessed support from the Advocacy service at a time when concerns about adult protection have been identified. Of these 5 have been supported during periods when they have been supported through adult protection plans.

## **Training and Workforce Development:**

*'... making arrangements for improving the skills and knowledge of officers .. of public bodies'* S42(1)(c) ASP(S)A 2007

The APC through the work of its Policy and Training sub group has taken forward the significant challenge



Figure 1 Adult Protection Training Framework





## Users and Carers:

### Service user outcomes

The Argyll & Bute Adult Protection Committee is working with the West Dunbartonshire Adult Protection Committee and the Lomond & Argyll Advocacy Service to develop a joint approach to seeking service user outcome feedback from adults who have been subjects of adult protection referral/inquiry.

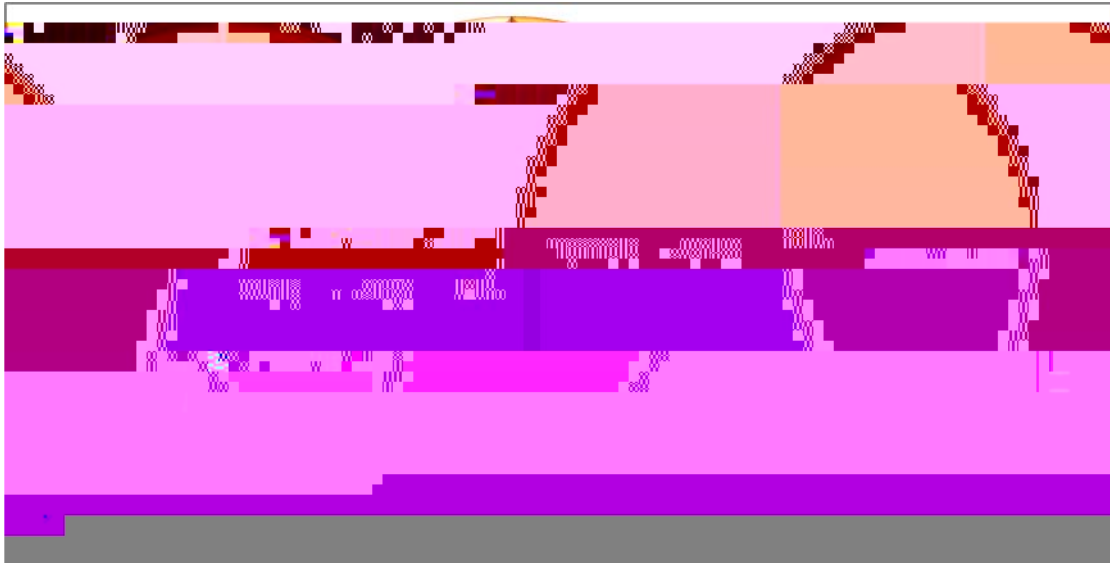
Both Committees make use of the Lomond & Argyll Advocacy Service and a common approach will secure consistency of approach to this activity, supporting common learning in relation to adults' experience of adult protection referral/intervention.

This initiative is currently under development with the West Dunbartonshire and Argyll and Bute APCs beginning a pilot for this activity on 1<sup>st</sup> October 2010. It is proposed that the pilot will be reviewed initially at 6 months. The outcome of this activity will be reported in 2011 and thereafter

## **Adult Protection Statistical Information for Argyll and Bute**

The appointment of specialist staff during 2009 has led to a development of the data sets from previously collated under 'Vulnerable Adult's' Guidance. This leads to difficulty in comparing activity carried out in 2008 – 2009 to that in 2009 – 2010. Thus for this first report reference is made primarily to statistics for the year 2009 – 2010 w

**Gender of Referred Adults (Total referrals – 124)**

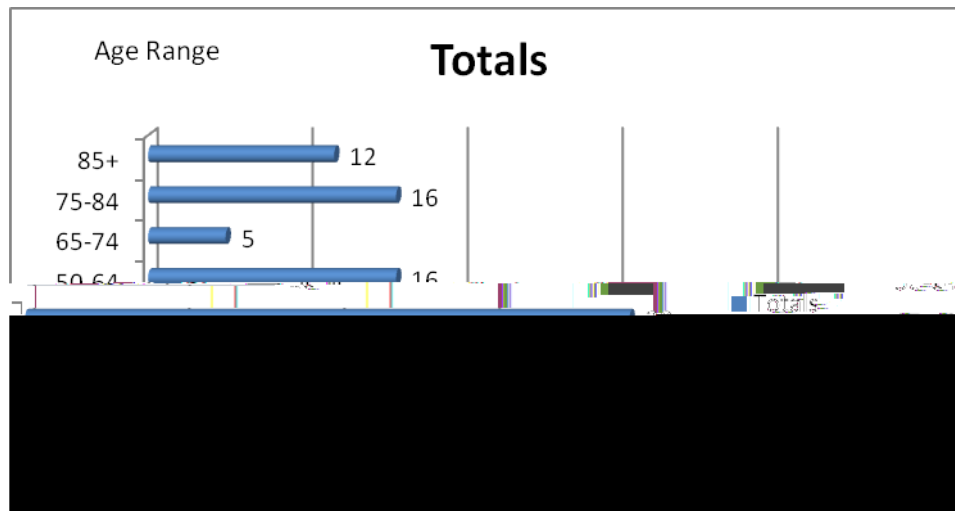


The balance in relation to referrals leans towards females with 67 females referred and 57 males referred.



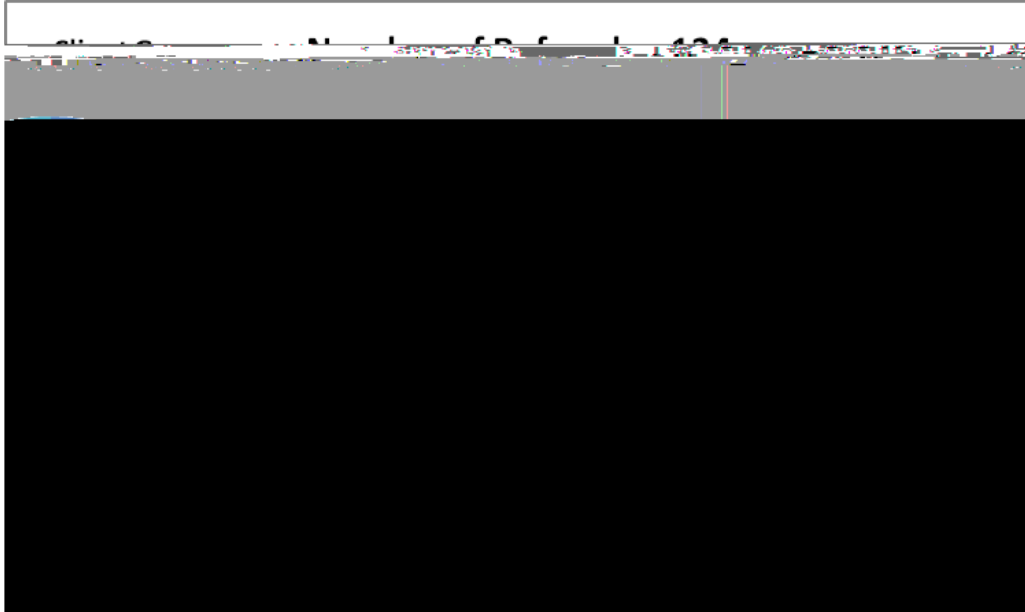
## Ethnicity

All referrals were of adults who are of White British origin. This is reflective of the information from the national census which shows that 96% of Argyll and Bute's population is of White British origin (2001 Census). **Age Groups of Referred Adults**



It is notable that 63% of referrals come from the 21 – 49 year age range. This reflects by the prevalence of referrals of those with combinations of issues relating to self harm where the impact of alcohol and or drug use is apparent and where mental health assessment may also be relevant.

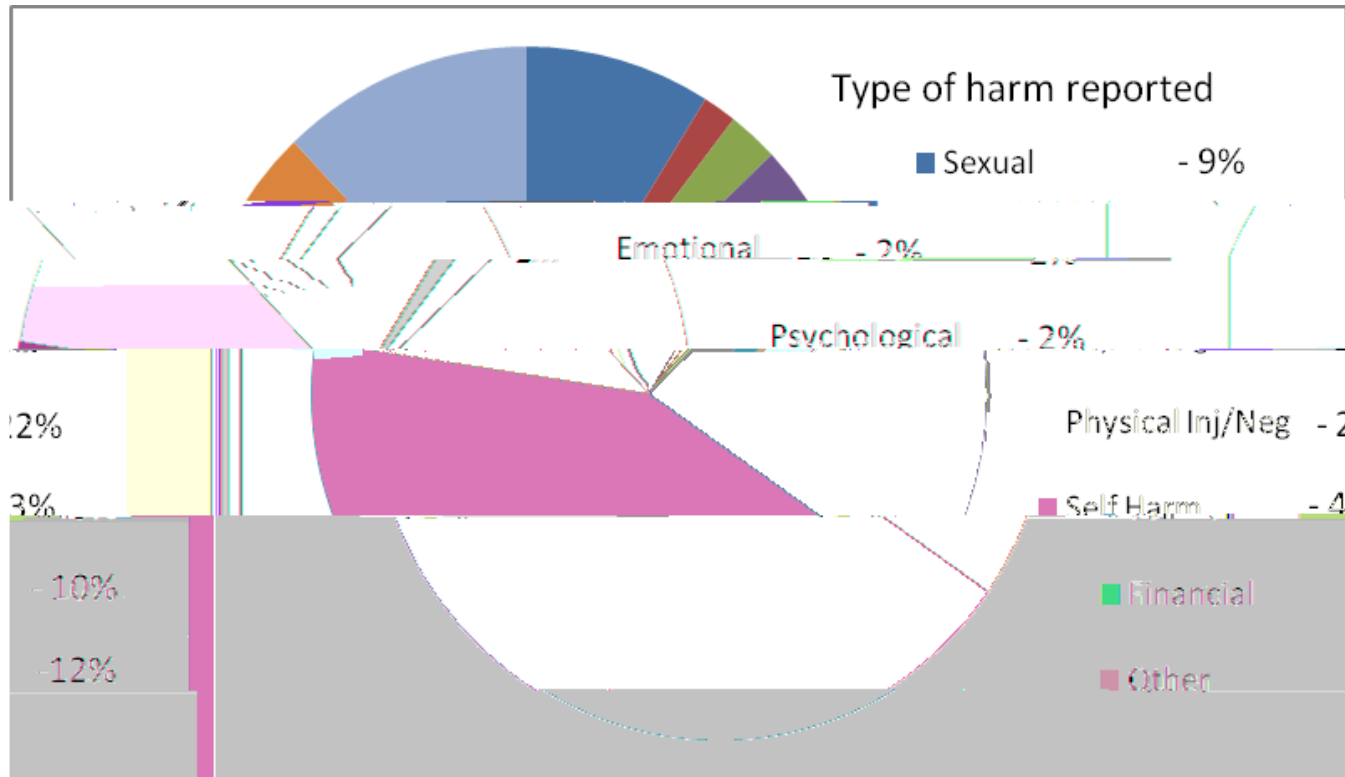
## Primary Service User Group of Referred Adults



This data again reflects the prevalence of those referred who have issues relating to alcohol use / threats of self harm / and questions in relation to mental disorder / mental infirmity.

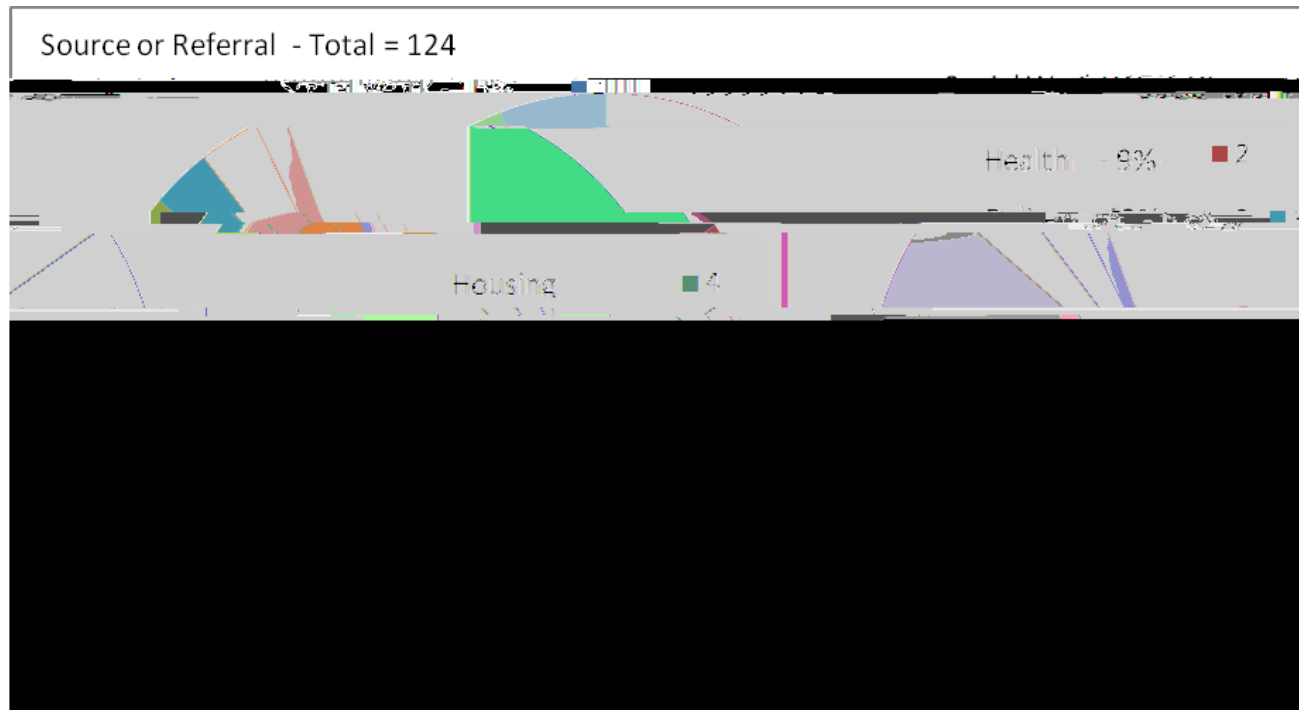
This information does not reflect the complexity of referrals with the majority of complex issues occurring in the learning disability and older peoples groups.

**Types of Harm Reported (Total referrals - 124 )**



Self Harm concerns are confirmed as most prevalent with Physical injury/neglect being next more common. The Argyll-Bute database has been updated to differentiate issues of neglect from those of physical harm for future years.

## Referral Source

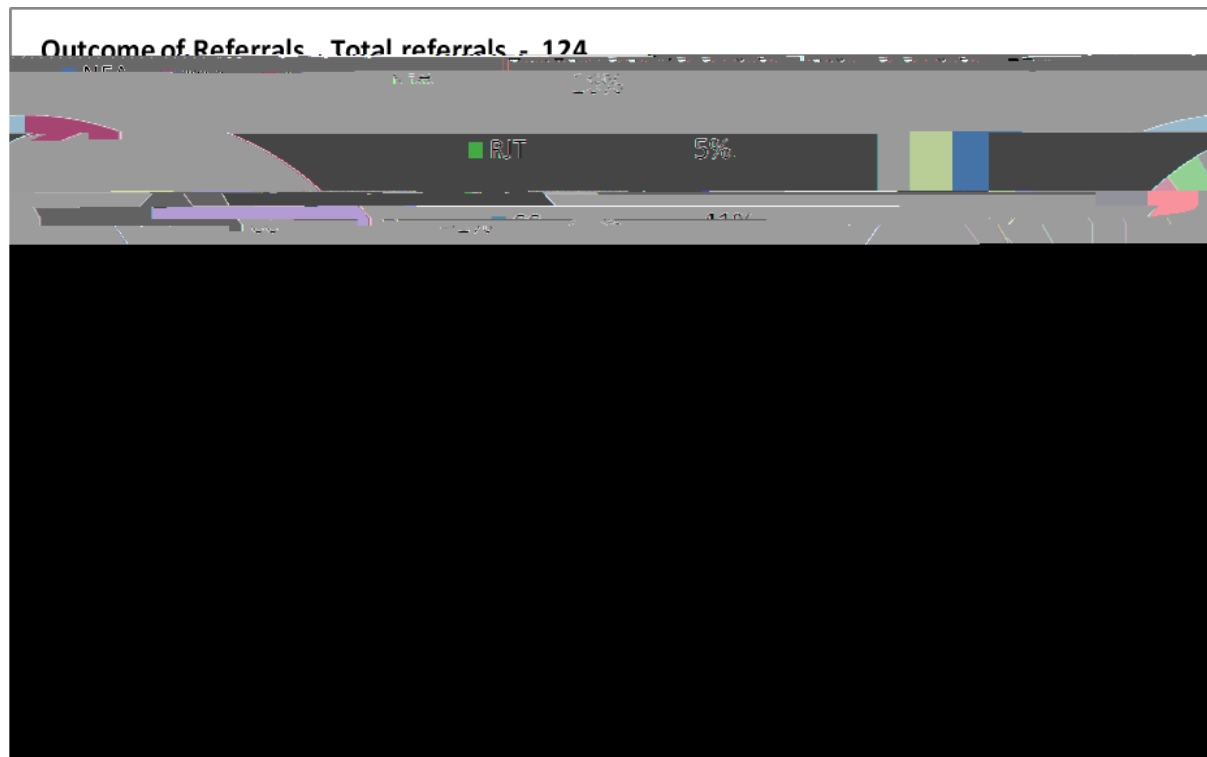


Police referrals are the largest source of referrals for 2009 – 2010 (77). With data from the first year of operation now being available discussions are planned with police colleagues to analyse referrals from the police to identify any improvements to current practice.

Data collection has developed as the year has progressed and whilst it is noted that there are no referrals from housing/homelessness services or Main Carer involvement of both parties was critical to protection activity. Data collection has now been developed to capture this information from April 2010 onwards.

The Committee is confident that after review of the first full year's information, the data collection system is fit for purpose. This system is fit for purpose.

## Outcome of Referrals



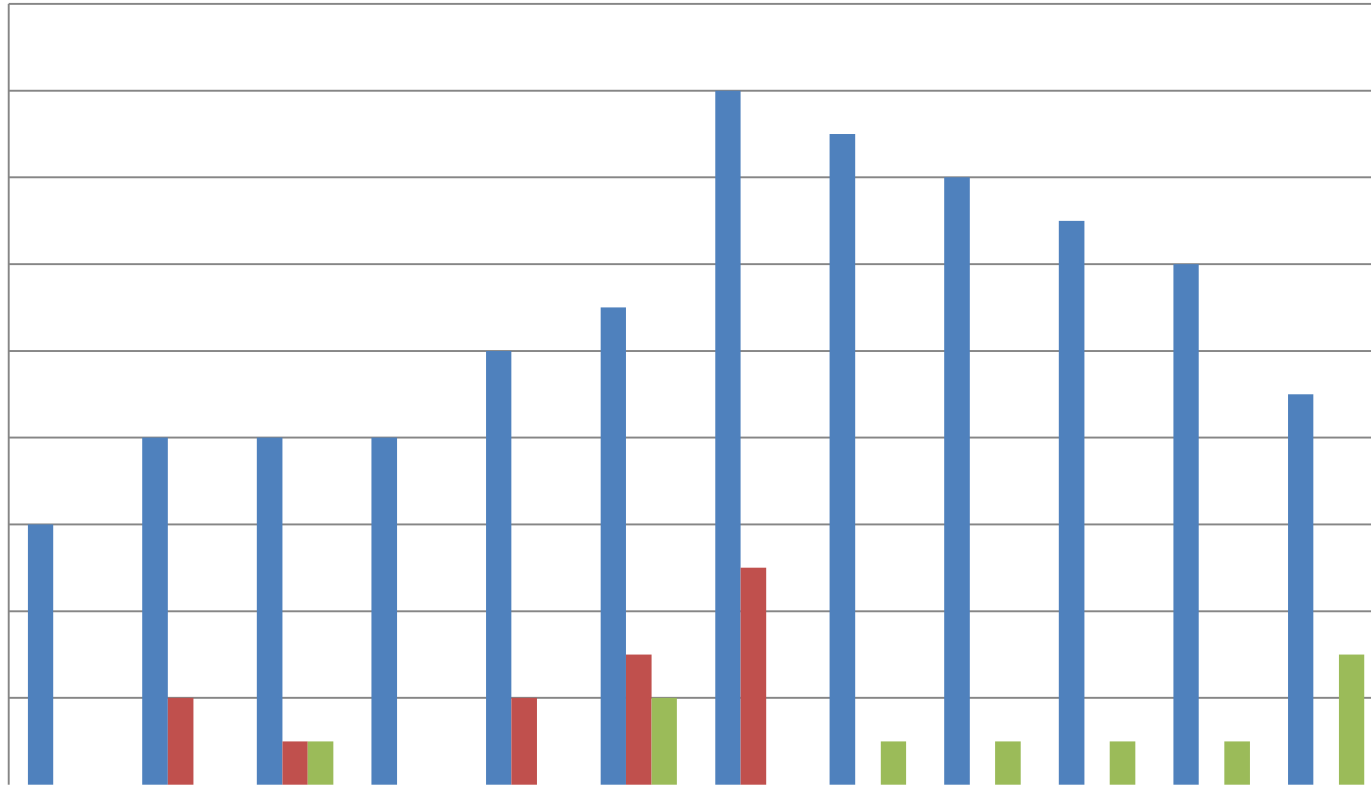
- NFA No Further Action
- RJT Client refused/rejected support offered
- CC Ongoing contact /referral to Community Care Teams
- CMHT Ongoing contact / referral to Community Mental Health team
- NHS Referral to / support from NHS3ppormooy C

Information gathering initially recorded a large number of referrals where 'no further action' (NFA) was taken in relation to Adult Protection referrals. However further analysis identified that many of the NFA decisions were taken on the basis that services which could meet the identified risk/need were already in place. Thus this pie chart records outcomes in relation to the responses to 'adults at risk' referrals. This approach is now being systematically applied for data gathering activity.

**Number of Adult Protection Case Conferences**



### Adults Supported through Monitoring of Protection Plans per month



## STATISTICAL INFORMATION - SUMMARY

The first full year of data collection following the implementation of the Act highlighted areas for improvement in relation to the gathering of Statistical information by the Argyll and Bute APC. Significant improvements have taken place throughout the year and this commitment to improvement will continue. The current data gives a good baseline to measure activity in the current and future years and should allow benchmarking with other local authorities in Scotland to be developed.

It is clear that activity has grown with a more than 2 fold increase in referrals between 2008 – 2009 and 2009 – 2010. The rise of referrals has increased from all partners with a massive increase noted in relation to police referrals. Total referrals in 2008-2009 were 1,725 (17.2%) and in 2009-2010 were 3,400 (34.0%).

It is the Committee's view that the development and delivery of 'Awareness Raising' training is having, and will continue to have, a growing impact on both referral rates and the quality of referrals as we move on into 2010 - 2011.

The Committee is using the information gathered during this first full year of activity to identify and target areas for further awareness training as we move into 2010 - 2011.

Work is already planned with police partners in relation to the analysis of police referrals to assess what can be learned from the information gathered in the last 12 months. Similar activity will be carried out in relation to other referral sources.



The data presented in this report is now being built into the corporate performance framework developed by Argyll-Bute Council. The Argyll and Bute Adult Protection Committee values the opportunity to access this system which has a growing value in that it is



## **Management of Services and Staff:**

In light of the geographical distances between centres of population in Argyll & Bute and in light of the current structure of Adult Services, it was impractical to set up an Adult Protection Unit to cover Argyll and Bute.

Argyll & Bute is divided into 4 areas for delivery of operational services these being: Helensburgh and Lomond, Dunoon and Cowal (with services being located in Dunoon and Rothesay), Mid Argyll, Kintyre and Islay (with service basis in Lochgilphead, Campbeltown and Islay), Oban, Lorne and the Isles, with services based primarily in Oban with outreach to Mull and the smaller Islands.

In order to meet the need to respond urgently to reports of “Adults at Risk”, one additional social worker post was established for each of the four areas.

These workers are managed through the existing operational management structure with the staff member maintaining a particular interest in, and supporting the development of practice in Adult Protection. The four workers have developed

## **Communication and Cooperation between Agencies:**

The Argyll & Bute Adult Protection Committee works within the West of Scotland Network. Links with other APCs, locally and nationally, are supported and there is commitment to working both within the 'West of Scotland Group' and nationally to address issues covering policy development, audit, training and practice needs. Albeit in the earliest stages the Committee recognises that these partnerships are key to the development of consistency of policy and practice throughout Scotland.

The development of the 'West of Scotland Inter Agency Guidance' has been fundamental to the development of practice in Argyll & Bute. The Argyll & Bute Manager for Adult protection attends the West of Scotland, Adult Support and Protection, Coordinators group, this providing a forum for lead officers and co-ordinators to share and learn from developments throughout the area..

The APC has appropriate representation from statutory agencies (attendance by those agencies is noted earlier in this report). Continuity of representation at the APC will be critical to the future development of an effective partnership to take forward the duties placed on the Adult Protection Committee. The level of engagement of partners in relation to the joint planning and delivery of "support and protection" activity will be monitored to ensure that the Committee's functions under the Act are achieved.

The report notes earlier the joint delivery of 'Awareness' training to staff throughout Argyll and Bute. The delivery and uptake of joint training is being monitored to ensure appropriate involvement from all agencies. The commitment to, and uptake of, joint training opportunities is recognised as being at the heart of the development of effective responses to reports of 'adults at risk'.

The involvement of the Housing/Homelessness Services in the Committee has been critical to dealing with some of the most vulnerable households in the area. The involvement of the housing sector ensures that housing services know how to access support for 'adults at risk' through use of the single referral process.

The Committee recognises the major challenge it faces in relation to developing effective communications with, and engagement of, the 'Community' in its work. The development of a Communications Strategy is already under discussion by the Committee as is identifying appropriate representation of community interests on the APC.

**Financial Information**

Account	YTD Actual 09-10
Staffing costs	191881.09
Training	15494.4
SCRO Checks	120

## Future Challenges

## Final Comments

At the end of this first reporting period I am pleased to confirm that the Argyll and Bute Adult Protection Committee has made a positive start to carrying out its statutory duties. The Committee recognises that much remains to be done. However, I believe a positive start has been made. The Committee, in partnership with the West of Scotland Group, in partnership,