



A GUIDE FOR SELF-CATERING PROVIDERS IN ARGYLL AND BUTE:

MANAGING BOOKINGS

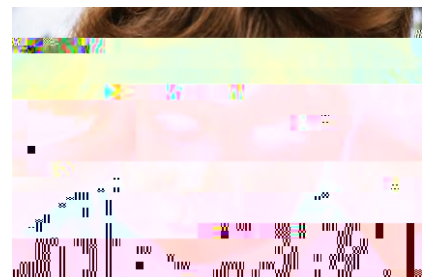
Self-catering accommodation within Argyll and Bute is varied in form and ranges from small town-centre flats to IMCID 12i0MC /Pfd4 (a)-5 (n)1(g)6 (em(d)-3)TjEMC /P MCID 7 BD

ADVERTISING THE PROPERTY

Advertising can include, but is not restricted to, adverts, leaflets, brochures and websites.

MUST

List your contact details, including an email address if available, to enable



REGULATORY SERVICES

Telephone 01546 605519

Email envhealth@argyll-bute.gov.uk
tradingstandards@argyll-bute.gov.uk

Bute and Cowal

22 Hill Street, Dunoon, PA23 7AP

Eaglesham House, Mount Pleasant Road, Rothesay, Isle of Bute, PA20 9HQ

Helensburgh and Lomond

Blairvadach, Shandon, Helensburgh, G84 8ND

Mid Argyll, Kintyre and Islands

Area Office, Manse Brae, Lochgilphead, PA31 8QU

Oban, Lorn and the Isles

Municipal Buildings, Albany Street, Oban, PA34 4AW

Headquarters

Kilmory, Lochgilphead, PA31 8RT